

Secondary Roll by Year Group & Total % Percentage Capacity Full: January 2021 (2020/21)
Appendix C: Table 1A

School Name	PAN	National Curriculum Year Group							Total Roll
		7	8	9	10	11	12	13	
Acland Burghley	182	183	192	184	166	179	122	109	1,135
Camden School for Girls	120	119	120	119	120	114	242	211	1,045
Hampstead	210	207	204	209	204	207	196	99	1,326
Haverstock #	180	124	141	120	136	174	121	67	883
La Sainte Union	180	124	165	156	170	167	113	96	991
Maria Fidelis	150	147	124	140	138	129	58	33	769
Parliament Hill	180	180	176	177	176	177	175	123	1,184
Regent High #	180	154	178	181	178	185	88	76	1,040
UCL Academy	192	193	174	169	172	171	138	117	1,134
William Ellis	130	109	127	131	127	110	153	96	853
All Camden Secondary Schools	1,704	1,540	1,601	1,586	1,587	1,613	1,406	1,027	10,360
% Capacity Full		90%	95%	94%	92%	94%			
Number of Unfilled School Places		164	91	106	135	104			

Source: January 2021 DfE School Census / % capacity full is based on the admission number from original year of entry / PAN - Planned Admission Number

Numbers and % percentages are clearly illustrated / # Permanently agreed unused capacity at Regent High 2FE and Haverstock 1FE is not included

Secondary Year 7 and Year 7 to 11 Trend 2016/17 to 2020/21: Admission Number, Number on Roll, Number of Unfilled Places, Percentage % of Unfilled Places

Appendix C: Table 1B

School Name	Admission Number					Number on Roll in Y7					Number Unfilled Y7 Places					Percentage Unfilled Y7 Places %				
	16/17	17/18	18/19	19/20	20/21	16/17	17/18	18/19	19/20	20/21	16/17	17/18	18/19	19/20	20/21	16/17	17/18	18/19	19/20	20/21
Acland Burghley	182	182	182	182	182	165	151	185	198	183	17	31	-3	-16	-1	9.3%	17.0%	-1.6%	-8.8%	-0.5%
Camden School for Girls	120	120	120	120	120	120	120	120	120	119	0	0	0	0	1	0.0%	0.0%	0.0%	0.0%	0.8%
Hampstead	210	210	210	210	210	208	204	211	205	207	2	6	-1	5	3	1.0%	2.9%	-0.5%	2.4%	1.4%
Haverstock	210	210	180	180	180	174	132	114	133	124	36	78	66	47	56	17.1%	37.1%	36.7%	26.1%	31.1%
La Sainte Union	180	180	180	180	180	178	179	170	162	124	2	1	10	18	56	1.1%	0.6%	5.6%	10.0%	31.1%
Maria Fidelis	150	150	150	150	150	128	142	135	138	147	22	8	15	12	3	14.7%	5.3%	10.0%	8.0%	2.0%
Parliament Hill	180	180	180	180	180	172	175	183	179	180	8	5	-3	1	0	4.4%	2.8%	-1.7%	0.6%	0.0%
Regent High	180	180	180	180	180	174	180	176	177	154	6	0	4	3	26	3.3%	0.0%	2.2%	1.7%	14.4%
UCL Academy	180	180	180	180	192	179	177	179	179	193	1	3	1	1	-1	0.6%	1.7%	0.6%	0.6%	-0.5%
William Ellis	125	130	130	130	130	115	130	129	128	109	10	0	1	2	21	8.0%	0.0%	0.8%	1.5%	16.2%
Camden Secondary Total	1,717	1,722	1,692	1,692	1,704	1,613	1,590	1,602	1,619	1,540	104	132	90	73	164	6.1%	7.7%	5.3%	4.3%	9.6%

School Name	Admission Number					Number on Roll in Y7					Number Unfilled Y7-11 Places					Percentage Unfilled Y7 Places %				
	16/17	17/18	18/19	19/20	20/21	16/17	17/18	18/19	19/20	20/21	16/17	17/18	18/19	19/20	20/21	16/17	17/18	18/19	19/20	20/21
Acland Burghley	910	910	910	910	910	750	755	784	847	904	160	155	126	63	6	17.6%	17.0%	13.8%	6.9%	0.7%
Camden School for Girls	572	580	588	596	600	573	580	588	598	592	-1	0	0	-2	8	-0.2%	0.0%	0.0%	-0.3%	1.3%
Hampstead	1,050	1,050	1,050	1,050	1,050	1,019	1,003	1,029	1,029	1,031	31	47	21	21	19	3.0%	4.5%	2.0%	2.0%	1.8%
Haverstock	1,050	1,050	1,020	990	960	971	884	775	732	695	79	166	245	258	265	7.5%	15.8%	24.0%	26.1%	27.6%
La Sainte Union	900	900	900	900	900	891	888	867	827	782	9	12	33	73	118	1.0%	1.3%	3.7%	8.1%	13.1%
Maria Fidelis	750	750	750	750	750	558	620	642	676	678	192	130	108	74	72	25.6%	17.3%	14.4%	9.9%	9.6%
Parliament Hill	900	900	900	900	900	883	877	899	889	886	17	23	1	11	14	1.9%	2.6%	0.1%	1.2%	1.6%
Regent High	900	900	900	900	900	767	825	875	870	876	133	75	25	30	24	14.8%	8.3%	2.8%	3.3%	2.7%
UCL Academy	900	900	900	900	912	873	871	872	861	879	27	29	28	39	33	3.0%	3.2%	3.1%	4.3%	3.6%
William Ellis	625	630	635	640	645	601	607	604	617	604	24	23	31	23	41	3.8%	3.7%	4.9%	3.6%	6.4%
Camden Secondary Total	8,557	8,570	8,553	8,536	8,527	7,886	7,910	7,935	7,946	7,927	671	660	618	590	600	7.8%	7.7%	7.2%	6.9%	7.0%

Information

Year 7 and Year 7-11 shown (where indicated) for all Camden schools, Admission Numbers from Admission School Booklets/Schools

Actual School Rolls based on DfE January School Census (main count) in all years

Numbers and % percentages are clearly illustrated / # Unused capacity permanently agreed at Regent High 2FE and Haverstock 1FE are **not included**

Key to Conditional Formatting (% unfilled places) - numbers are rounded which may appear to affect some conditional formatting - the rounding may not be fully visible

The Department for Education (DfE) provides guidance suggesting that for the efficient operation of the school system and to give space for the expression of parental preference, authorities should target 5% surplus within their area, conditional formatting reflects this.

GREEN - surplus school places equal or under 5.0%
AMBER - surplus school places between 5.01% and 10.0%
RED - surplus school places equal or over 10.01%

Secondary School Net Capacity 2021

Appendix C: Table 2A

DfE No	School	As At MAY NOR*	Net Capacity 2021	Net Capacity % Surplus MAY
4285	Acland Burghley	1,140	1,381	17.5
4611	Camden School for Girls	1,043	1,134	8.0
4275	Hampstead	1,326	1,330	0.3
4104	Haverstock	887	1,224	27.5
5401	La Sainte Union	986	1,185	16.8
4652	Maria Fidelis	761	1,178	35.4
4166	Parliament Hill	1,175	1,260	6.7
4196	Regent High	1,048	1,467	28.6
4000	UCL Academy	1,134	1,150	1.4
4688	William Ellis	852	903	5.6
Camden Secondary Total		10,352	12,212	15.2

Information

School Net Capacity 2021 provided by Camden Property and Contracts

*Includes actual numbers on roll (NOR) from May 2021 provisional DfE School Census (Y7-post 16), representing the 2020/21 cohort

Notes on higher NET CAPACITY surplus schools/why >20%: Haverstock-lower rolls and 1FE capacity not in use, Maria Fidelis-lower rolls though improving/new school, and Regent High- 2FE of built additional capacity not in use. Capacity figures for schools can change to accommodate new additions/re-organising of space.

Secondary Actual Net Capacity Surplus Trend 2017 to 2021

Appendix C: Table 2B

Camden Total	Percentage % Actual Net Capacity Surplus					Numbers 2021		
	2017	2018	2019	2020	2021	*Actual Pupils NOR MAY	Net Capacity	Actual Surplus NOR/NetCap
Camden Secondary Total	13.8	15.9	15.6	16.3	15.2	10,352	12,212	1,860

Information

School Net Capacity 2021 provided by Camden Property and Contracts

*Includes actual numbers on roll (NOR) from May 2021 provisional DfE School Census (Y7-post 16), representing the 2020/21 cohort

Percentage % net capacity surplus is based on May DfE School Census 2017 to 2019, and 2021

Notes on higher NET CAPACITY surplus schools/why >20%: Haverstock-lower rolls and 1FE capacity not in use, Maria Fidelis-lower rolls though improving/new school, and Regent High- 2FE of built additional capacity not in use. Capacity figures for schools can change to accommodate new additions/re-organising of space.

2019/20 to 2021/22 Year 7 Secondary Transfer Offer Day - Historic Detail

Appendix C: Table 3

Offered School/Borough	PAN	Number									Percentage %		
		Camden Resident			Non-Resident			All Offers			Camden Resident		
		2019/20	2020/21	2021/22	2019/20	2020/21	2021/22	2019/20	2020/21	2021/22	2019/20	2020/21	2021/22
Acland Burghley	182	102	100	120	76	78	62	178	178	182	57	56	66
Camden School for (Girls)	120	89	101	92	31	19	28	120	120	120	74	84	77
Hampstead	210	84	71	67	126	139	143	210	210	210	40	34	32
Haverstock	180	172	174	163	8	6	15	180	180	178	96	97	92
La Sainte Union Convent (Girls)	180	45	33	90	135	110	61	180	143	151	25	23	60
Maria Fidelis Convent	150	103	109	110	47	41	40	150	150	150	69	73	73
Parliament Hill (Girls)	180	122	132	119	58	48	61	180	180	180	68	73	66
Regent High	180	160	157	164	20	23	16	180	180	180	89	87	91
UCL Academy	192	159	168	171	21	24	21	180	192	192	88	88	89
William Ellis (Boys)	130	107	99	97	23	31	33	130	130	130	82	76	75
Camden Offer All Secondary	1,704	1,143	1,144	1,193	545	519	480	1,688	1,663	1,673	68	69	71
Other London Borough School		378	390	381				378	390	381	100	100	100
Local Authority School Outside London		5	4	9				5	4	9	100	100	100
Other Local Authority Offer		383	394	390	0	0	0	383	394	390	100	100	100
No Offer / Other LA School*		50	35	0	1,049	954	899	1,099	989	899	5	4	0
Total Applicants		1,576	1,573	1,583	1,594	1,473	1,379	3,170	3,046	2,962	50	52	53

Source: Admissions 'Year 7 Secondary Offer at beginning of March specified years', numbers are shown unless otherwise stated / PAN = Planned Admission Number

*Note for 'unplaced' non-residents, Camden is not responsible for finding places, these children may have been allocated a school place by their 'home' borough

*Note late and SEN (refusing a school place) applicants are included in these figures

2020/21 UCL Academy PAN increased +12. Acland Burghley does not have vacancies, they are resource base provision.

Camden Secondary Years 7 to 11: Pupil Borough of Residence

Appendix C: Table 4

Secondary Year 7 to 11 Borough of Residence	2017		2018		2019		2020		2021	
	No	%	No	%	No	%	No	%	No	%
Camden	5,036	64%	5,010	63%	5,111	64%	5,102	64%	5,115	65%
Islington	1,034	13%	1,056	13%	1,057	13%	1,136	14%	1,172	15%
Brent	575	7%	629	8%	630	8%	606	8%	576	7%
Barnet	385	5%	396	5%	407	5%	382	5%	381	5%
Haringey	235	3%	222	3%	214	3%	222	3%	211	3%
Westminster	224	3%	239	3%	204	3%	205	3%	196	2%
Hackney	162	2%	156	2%	136	2%	121	2%	102	1%
Enfield	68	1%	62	1%	59	1%	52	1%	40	1%
Waltham Forest	35	0%	34	0%	35	0%	27	0%	37	0%
Tower Hamlets	19	0%	19	0%	15	0%	14	0%	11	0%
Southwark	18	0%	16	0%	13	0%	13	0%	7	0%
Other London Borough	78	1%	62	1%	49	1%	51	1%	69	1%
Outside London	17	0%	9	0%	5	0%	15	0%	10	0%
Camden Secondary Total	7,886	100%	7,910	100%	7,935	100%	7,946	100%	7,927	100%

Source: DfE January School Census, home borough of children in Camden schools

Camden Residents in Other Borough Secondary School Provision: 2017 to 2021

Appendix C: Table 5

LA no	Borough School	National Curriculum Years 7 to 11 (Number)					National Curriculum Years 7 to 11 (Percentage)				
		2017	2018	2019	2020	2021	2017	2018	2019	2020	2021
302	Barnet	176	175	173	179	179	9%	9%	9%	9%	9%
303	Bexley	<5	0	0	0	0	0%	0%	0%	0%	0%
304	Brent	85	88	90	94	91	4%	5%	5%	5%	5%
305	Bromley	<5	<5	0	<5	<5	0%	0%	0%	0%	0%
306	Croydon	<5	0	0	<5	0	0%	0%	0%	0%	0%
307	Ealing	0	<5	<5	<5	<5	0%	0%	0%	0%	0%
308	Enfield		8	16	8	6		0%	1%	0%	0%
203	Greenwich	<5	<5	<5	0	0	0%	0%	0%	0%	0%
204	Hackney	22	12	14	11	10	1%	1%	1%	1%	1%
205	H&F	43	35	35	34	31	2%	2%	2%	2%	2%
309	Haringey	33	35	29	30	23	2%	2%	1%	2%	1%
310	Harrow	<5	<5	8	8	<5	0%	0%	0%	0%	0%
311	Havering	0	0	0	0	<5	0%	0%	0%	0%	0%
919	Hertfordshire	16	17	6	16	12	1%	1%	0%	1%	1%
312	Hillingdon	<5	<5		0		0%	0%		0%	0%
313	Hounslow	8	6	6	<5	<5	0%	0%	0%	0%	0%
206	Islington	691	659	575	557	526	36%	34%	30%	29%	27%
207	K&C	50	55	61	60	60	3%	3%	3%	3%	3%
314	Kingston	<5	<5	<5	0	0	0%	0%	0%	0%	0%
208	Lambeth			44	31	17			2%	2%	1%
209	Lewisham	<5	<5	<5	<5	0	0%	0%	0%	0%	0%
315	Merton	0	<5		0	<5	0%	0%		0%	0%
316	Newham	<5	<5	6	10	9	0%	0%	0%	1%	0%
317	Redbridge	<5	0			<5	0%	0%			0%
318	Richmond	0	<5	0	0	0	0%	0%	0%	0%	0%
210	Southwark	9	0	17	0	11	0%	0%	1%	0%	1%
319	Sutton	<5	<5	<5	<5	<5	0%	0%	0%	0%	0%
211	Tower Hamlets	<5	<5		<5	<5	0%	0%		0%	0%
320	Waltham Forest	<5	<5	<5	<5	<5	0%	0%	0%	0%	0%
212	Wandsworth	0	<5	<5	<5	0	0%	0%	0%	0%	0%
213	Westminster	768	803	849	888	940	40%	42%	44%	46%	49%
Camden Residents Other Borough Total		1,923	1,924	1,941	1,947	1,936	100%	100%	100%	100%	100%

Source: **January** 2017-21 DfE School Census returns and data sharing summary numbers with neighbouring boroughs

Blanks indicate boroughs' not supplying resident data / <5 indicates numbers less than or equal to 5

Camden residents attending other borough schools in secondary years 7-11

Camden Borough GLA School Roll Projections Roll Projections: Forecasts of Secondary Age Children

SRP 2021 = Projections received June 2020 with GLA 2019-Based Population Projections, Camden Development
SRP 2020 = Projections received June 2020 with GLA 2018-Based Population Projections, Camden Development
SRP 2019 = Projections received May 2019 with GLA 2017-Based Population Projections, Camden Development
Actuals = PAN: (Planned Admission Number) based on September. * PAN Unused: permanently unused school capacity shown for information i.e. 2.5FE Haverstock/2FE Regent High. Actual School Rolls: children attending by national curriculum year, January DfE School Census.
Forecasts SRP = GLA school roll forecasts should be treated with caution, estimates change/not actuals, therefore rounded to nearest 10 to avoid misinterpretation. Borough forecast totals for are calculated from original numbers, before being rounded to the nearest 10.

GLA Forecast: children aged 11 years old (year 7)

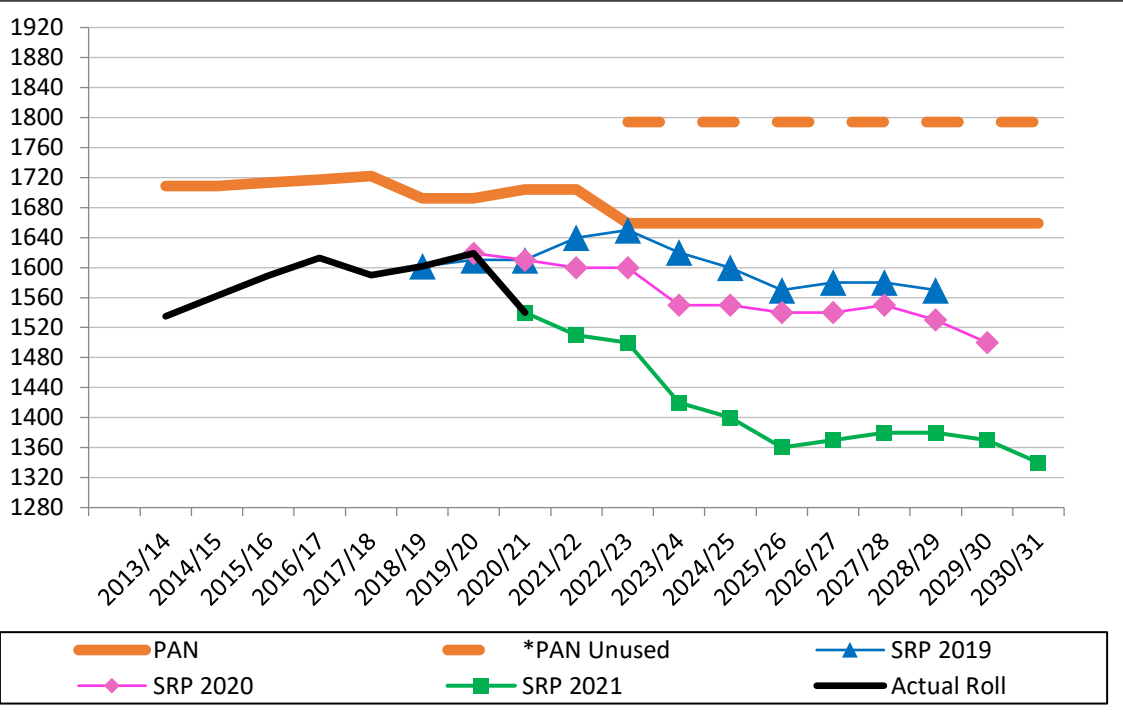
Borough	PAN	*PAN Unused	Actual Roll	SRP 2019	SRP 2020	SRP 2021	No. Surplus/Deficit		% Surplus/Deficit	
							PAN	*PAN Unused	PAN	*PAN Unused
2013/14	1,709		1,535				174		10.2%	
2014/15	1,709		1,562				147		8.6%	
2015/16	1,713		1,589				124		7.2%	
2016/17	1,717		1,613				104		6.1%	
2017/18	1,722		1,590				132		7.7%	
2018/19	1,692		1,602	1,602			90		5.3%	
2019/20	1,692		1,619	1,610	1,619		73		4.3%	
2020/21	1,704		1,540	1,610	1,610	1,540	164		9.6%	
2021/22	1,704			1,640	1,600	1,510	194		11%	
2022/23	1,659	1,794		1,650	1,600	1,500	159	294	10%	16%
2023/24	1,659	1,794		1,620	1,550	1,420	239	374	14%	21%
2024/25	1,659	1,794		1,600	1,550	1,400	259	394	16%	22%
2025/26	1,659	1,794		1,570	1,540	1,360	299	434	18%	24%
2026/27	1,659	1,794		1,580	1,540	1,370	289	424	17%	24%
2027/28	1,659	1,794		1,580	1,550	1,380	279	414	17%	23%
2028/29	1,659	1,794		1,570	1,530	1,380	279	414	17%	23%
2029/30	1,659	1,794			1,500	1,370	289	424	17%	24%
2030/31	1,659	1,794				1,340	319	454	19%	25%

GLA Forecast: children aged 11 to 15 years old (years 7 to 11)

Borough	PAN	*PAN Unused	Actual Roll	SRP 2019	SRP 2020	SRP 2021	No. Surplus/Deficit		% Surplus/Deficit	
							PAN	*PAN Unused	PAN	*PAN Unused
2013/14	8,001		7,308				693		8.7%	
2014/15	8,183		7,482				701		8.6%	
2015/16	8,369		7,690				679		8.1%	
2016/17	8,557		7,886				671		7.8%	
2017/18	8,570		7,910				660		7.7%	
2018/19	8,553		7,935	7,935			618		7.2%	
2019/20	8,536		7,946	7,970	7,946		590		6.9%	
2020/21	8,527		7,927	7,970	7,990	7,927	600		7.0%	
2021/22	8,514			7,980	7,920	7,810	704		8%	
2022/23	8,451	8,946		8,020	7,920	7,740	711	1,206	8%	13%
2023/24	8,418	8,958		8,030	7,880	7,620	798	1,338	9%	15%
2024/25	8,385	8,970		8,020	7,810	7,450	935	1,520	11%	17%
2025/26	8,340	8,970		7,980	7,750	7,320	1,020	1,650	12%	18%
2026/27	8,295	8,970		7,920	7,680	7,210	1,085	1,760	13%	20%
2027/28	8,295	8,970		7,860	7,640	7,130	1,165	1,840	14%	21%
2028/29	8,295	8,970		7,800	7,630	7,120	1,175	1,850	14%	21%
2029/30	8,295	8,970			7,590	7,100	1,195	1,870	14%	21%
2030/31	8,295	8,970				7,090	1,205	1,880	15%	21%

Appendix C: Table 6

2012/13 Permanent Places (+180): UCL Academy from Y7
2015/16 & 2016/17 Permanent Places (+4 & +4): Camden School for Girls from Y7
2017/18 Permanent Places (+5): William Ellis from Y7
2018/19 Permanent Places (-30): Haverstock from Y7
2020/21 Permanent Places (+12): UCL Academy from Y7
2022/23 Permanent Places (-45): Haverstock from Y7



Note chart scales: Age 11 Increases by 40 / Age 11-15 Increases by 200

